

WE ARE RESILIENT

2021-2022 ANNUAL REPORT



Hibiscus Children's Center
Saving Children Since 1985

A LETTER FROM OUR CHAIRMAN

A MESSAGE FROM SCOTT ROADS, CHAIRMAN, HIBISCUS BOARD OF DIRECTORS

Welcome to Hibiscus Children's Center 2022 Annual Report. On behalf of the Board of Directors, thank you for supporting abused, abandoned, and neglected children in our care.

It continues to be a challenging time. Today, Hibiscus is navigating higher costs for everything and staffing challenges in a tight as a drum labor market. Despite these challenges, our leadership team and long-tenured staff are doing a terrific job and remain laser-focused on the mission.

Last fiscal year, 1,700 children and families received services through residential and community outreach programs, including 140 children who slept safely in the Shelter and Village. Hibiscus emphasizes trauma care in all our programs and staff fully embrace the Sanctuary Model—a framework that promotes safety and recovery from adversity.

This Annual Report highlights Hibiscus' services and the positive outcomes children and families have experienced through the following programs:

SUPPORTING FAMILIES IN CRISIS (SFC) is a voluntary prevention program to help alleviate an immediate crisis in the family and has a 100% success rate of keeping children out of the child welfare system.

MENTAL HEALTH SERVICES specialize in treating trauma-based disorders and offer non-traditional therapeutic approaches through Equine & Music Therapy.

SEXUAL ABUSE TREATMENT PROGRAM (SATP) is the only such program on the Treasure Coast and Okeechobee certified by the Florida Department of Health.

CAREER PATHWAYS TO INDEPENDENCE is a positive youth development program that encourages academic achievement and career training.

CULINARY & GRAPHIC DESIGN IMPACT CENTERS provide teens with marketable skills and opportunities to use their talent and creativity.

VILLAGE & SHELTER residential services offer safe haven and homelike environment for children removed from their homes. The primary goal is child safety, but an impressive range of services are provided to meet a child's needs.

Thank You to our donors, governance board, guilds, volunteers, employees and community for your partnership. Together we are transforming the lives of defenseless children.

BOARD OF DIRECTORS

**PRESIDENT
& CEO**
Matt Markley

FOUNDER
LaVaughn Tilton*
1995 -2021

**HONORARY
DIRECTORS**
Randy Riley
George H. Swift III *

OFFICERS
Scott Roads
Chairman
Michael LaPorta
Vice Chair
Tracey Dexter
Treasurer
Mike Harrell
Secretary
Frank Noonan
Past Chair

DIRECTORS
Donna Ambrosino, M.D.
Dan Braden
Armund Ek
Nicholas Ferraro
Beckett Horner, Esq.
Deborah Kessler
Fernando Petry, D.O.
Travis Walker, Esq.
Dave Wilson



WE ARE RESILIENT

TILTON FAMILY

CHILDREN'S SHELTER

Children are resilient. Children living at Hibiscus Children's Center have endured much trauma. At the Shelter we are helping them recover and move forward past the hurt and abuse. Resilience is needed to process and overcome hardship, tap into strengths and support systems to overcome challenges and work through problems. Professional staff and caring volunteers provide support, encouragement and guidance children need every day.

The Shelter provides safe haven for up to thirty-six abused, abandoned and neglected children, infant to age 12. A child over twelve can be admitted as part of a sibling group. All children in our care receive medical, dental, education and literacy services. 100% of children participating in the Shelter Literacy Program improved their reading proficiency last year.

Counseling is provided by master's level therapists who specialize in the treatment of trauma-based disorders and victims of sexual abuse. The program uses non-traditional approaches like Equine and Music Therapy to help children acquire self-esteem and life skills.



97%

OF CHILDREN ATTENDING SCHOOL WERE PROMOTED TO THE NEXT GRADE LEVEL

BRIANA has endured personal circumstances that most adults would not be able to manage. She arrived at the Shelter scared and unsure of what would happen to her and her older brother. Briana was immediately enrolled in middle school. As expected, she experienced school and behavior challenges. But the staff didn't give up and Briana was determined to improve her life. She met with her counselor consistently and was tutored on a regular basis.

Today, Briana is still in Hibiscus' care, but has a great attitude and is flourishing academically. She scored in the 98th percentile on her exams and her teachers are amazed at her progress. Briana was chosen for a special program that allows her to take testing designed for college-bound high school students even though she is still in middle school. Briana faced her difficulties head-on and found a way to bounce back. Briana is resilient!

According to a study conducted by Harvard University, the single most common factor for children who develop resilience is at least one stable and committed relationship with a supportive parent or caregiver. Hibiscus staff and volunteers stepped in to ensure Briana had this vital relationship.

100%

OF CHILDREN RECEIVED A MENTAL HEALTH ASSESSMENT WITHIN 24 HOURS OF ADMISSION

31

CHILDREN ENROLLED IN SCHOOL

24

TUTORING SESSIONS IN 4TH QUARTER

22

CHILDREN'S BIRTHDAYS WERE CELEBRATED

9

CHILDREN ENROLLED IN PRESCHOOL/VPK



MEET MS. STACI

STACI MCKEON,
DIRECTOR OF SHELTER OPERATIONS

Staci has been with Hibiscus for 32 years and is the longest tenured staff member. She has a heart for children and helping them overcome trauma. She uses her knowledge and passion to help children every day as she supervises the daily Shelter operations including Department of Children and Families (DCF) licensing and Community Based Care (CBC) contract compliance and oversight.

WE ARE COURAGEOUS

HIBISCUS

CHILDREN'S VILLAGE

Youth are courageous. Teens living at the Hibiscus Village are often placed in many different foster arrangements before coming to Hibiscus. The familiar adage "Courage is not the absence of fear, but the triumph over it," holds true for youth who have experienced immense trauma and fear. Hibiscus staff and committed volunteers provide the support, encouragement and guidance teens need to overcome their fears and develop the resolve to create better futures.

The Village is a 40-bed group home environment that provides safe haven for youth aged 12-17. It consists of a campus center, outdoor activity/basketball area and eight homes, six of which are residences for children. The campus includes a Career Pathways Center featuring Graphic Design and Culinary components and an academic achievement center. Teens receive mental health, medical, educational and career training services while in our care. They are strongly encouraged to stay in school and earn their diploma or GED.



THAT WAS GREAT TO FINALLY HAVE SOMEONE REMEMBER ME ON MY BIRTHDAY – I HAVEN'T GOTTEN ANY PRESENTS OR BIRTHDAY CAKE IN YEARS!

- VILLAGE RESIDENT

OVERALL SCHOOL ATTENDANCE FOR TEENS HAS IMPROVED



TYRONE

began the school year in 8th grade and within two weeks was promoted to 9th grade due to credit recovery.

2

STUDENTS THAT WERE SKIPPING CLASSES HAVE DECIDED TO WORK HARD AND ARE NOW ATTENDING ALL CLASSES

KYLE

made the Performance Theatre team and will be acting in theatre plays with his high school

1

STUDENT JOINED THE JAZZ CLUB AND TWO TEENS TRIED OUT FOR VOLLEYBALL TEAM



WE ARE PROUD OF THESE COURAGEOUS YOUTH



MEET MS. SHERYL

SHERYL OVERCASH, BBA
DIRECTOR OF VILLAGE OPERATIONS

Sheryl has been a member of the Hibiscus team since 2006 and has a passion for working with teens. She uses her experience, knowledge, and skills to supervise daily operations including monthly budget reports, workforce issues, Multi-Disciplinary Team and treatment team staffing. Sheryl was instrumental in helping Hibiscus implement the Sanctuary Model.

WE ARE DETERMINED

CAREER PATHWAYS TO INDEPENDENCE PROGRAM

Youth living at Hibiscus Village are determined to have a better life. Career Pathways helps them plan and prepare for a successful future. Teens 12-17 participate in a positive youth development program that encourages academic achievement by developing life skills and job readiness training. Youth are engaged in community-based internships with local businesses and agencies. Hibiscus provides on-site internships through the Graphic Design Impact Center and Culinary program. Education is strongly emphasized, youth are encouraged to receive their high school diploma or GED. Academic support is provided by professional staff while volunteers provide tutoring.

This creative program helps alleviate the stresses foster care youth face as they approach eighteen. It provides teens with support, structure, and guidance. Youth participate in forward-thinking career exploration, testing, and assessment to help further their development and build a solid foundation for the future.



I GET TO DO DRAWING, PAINTING, AND MANY OTHER TYPES OF ART!

ISABELLA was placed at the Village when she was fifteen. Staff suspected she may have been a victim of human trafficking. It was difficult to communicate with Isabella at first since she did not speak English and school had not been a priority in her home country. She had no concept of a calendar and limited writing skills. Bilingual staff were able to communicate with her in Spanish allowing Isabella to learn basic English.

Through sheer determination and with support from Hibiscus staff and volunteers, Isabella's schoolwork improved, and she pursued typical teen activities. Her cell phone is one of her biggest enjoyments! She also volunteered to help other students in the academic achievement and Graphic Design Impact Centers. Initially reluctant to try new things, Isabella has a more hopeful attitude and looks forward to a productive life. **Isabella is determined!**

WE ARE SO PROUD OF ISABELLA'S ACCOMPLISHMENTS & HARD WORK!



MEET MR. FRANK

FRANK AVILLA, DIRECTOR OF CAREER PATHWAYS TO INDEPENDENCE PROGRAM

Frank has been with Hibiscus since April 2017 and has a passion for helping teens build the foundation for a successful transition into adulthood. Frank teaches youth life skills, independent living skills and career preparation. He manages the Graphic Design Impact Center and Culinary components, coordinates teens in community internships, plans weekly seminars, collaborates with businesses, plans college tours, creates reports, writes grants for program funding and more.

WE ARE SUCCESSFUL

COMPONENTS OF CAREER PATHWAYS PROGRAM

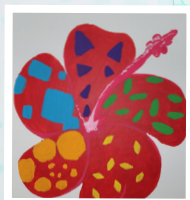
Graphic Design Impact Center (GDIC) and **CULINARY** are both components of the Career Pathways Program. They provide on-site career development and training which are designed to teach youth marketable and life skills. Youth who participate will be better prepared for independence, gainful employment and advancing their education.



MR. MARCUS, GRAPHIC DESIGN IMPACT CENTER INSTRUCTOR



I REALLY ENJOY WORKING WITH MR. MARCUS, I HAVE LEARNED A LOT.



GRAPHIC DESIGN IMPACT CENTER

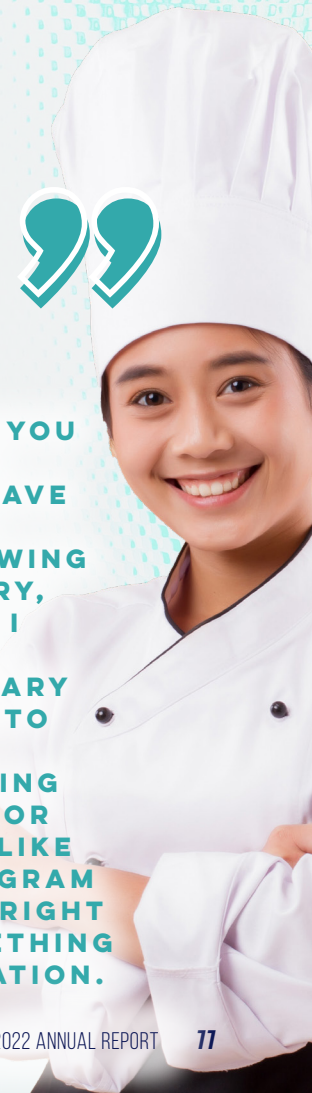
GDIC is led by Mr. Marcus, an award-winning graphic designer with 15 years' of experience. The goal of the program is to prepare youth for more advanced technical and "white collar" jobs. Youth learn skills through the Adobe Creative Suite using their creativity and talents to design a variety of internal and external projects. One example is creating logos in vector form in Adobe Illustrator. The process requires a knowledge of curves, angles, and color theory. Students created a minimum of three distinctive designs, starting with basic shapes all the way up to team sports logos. This process helps students think creatively while learning new skills.

C.U.L.I.N.A.R.Y.

C.U.L.I.N.A.R.Y. component (Cooking Up Life skills, Intellect, and Nutrition for Ambitious & Resilient Youth) provides culinary education and training to gain food handling and service certifications. Special thanks to our partner, Chef Leanne Kelleher and The Tides restaurant for providing youth with hands-on food preparation, training and employment.



THE HIBISCUS STAFF GIVE YOU LIFE LESSONS. THE HOUSE PARENTS WANT YOU TO LEAVE HIBISCUS READY FOR THE OUTSIDE WORLD AND KNOWING HOW TO COOK, DO LAUNDRY, CLEAN AND OTHER STUFF. I STARTED COOKING WHEN I CAME TO HIBISCUS. CULINARY IS A DISCIPLINE. YOU GOT TO HAVE DISCIPLINE IN THE KITCHEN TO GET EVERYTHING OUT ON TIME. IT'S GOOD FOR PEOPLE TO SEE SOMEONE LIKE US COME OUT OF THE PROGRAM DOING GOOD AND ON THE RIGHT PATH. WE CAN MAKE SOMETHING GOOD OUT OF A BAD SITUATION.



WE ARE CONFIDENT

IN THE WORDS OF YOUTH

"I would like to thank the community members for taking time out of their lives to donate and provide jobs for us. Society marks us as troubled kids—Thank you for giving us a chance. It is highly appreciated by many. It shows kids like us that there are people that still care and will lend a helping hand to a child in need."

"I get excited and motivated knowing that a lot of kids don't get the chance to have same opportunities that we have here in Career Pathways. I'm so grateful for everything our staff and this program does for us. And it's not always about jobs, banking, and education...many of the adults will take the time to talk with us about any other topic we want or need to discuss."

"I really love what we do here in the Career Pathways program. I've always enjoyed learning new things. The skills I get here at Hibiscus will give me an advantage that will make me a much more productive adult. One day I hope I'll be able to share these gifts with other kids."



100%

OF YOUTH IMPROVED CAREER-RELATED SKILLS, INDEPENDENT LIVING AND/OR LIFE SKILLS KNOWLEDGE

98%

OF YOUTH WERE PROMOTED TO THE NEXT GRADE LEVEL

83%

IMPROVED THEIR SCHOOL ATTENDANCE BY DECREASING NUMBER OF ABSENCES FROM ONE SEMESTER TO THE NEXT

97%

IDENTIFIED POST-GRAD OPPORTUNITIES AND THE STEPS NEEDED TO OBTAIN THEM

66

YOUTH PARTICIPATED IN THE CAREER PATHWAYS PROGRAM

1

STUDENT ACHIEVED HONOR ROLL; 2 STUDENTS ACHIEVED HIGH HONOR ROLL

2

SENIORS LIVING AT VILLAGE; 1 GRADUATED HIGH SCHOOL AND 1 RECEIVED THEIR GED

THANK YOU

FOR HELPING YOUTH BUILD THE CONFIDENCE THEY NEED TO BECOME PRODUCTIVE ADULTS AND HAVE A BETTER FUTURE.



WE ARE STRONG

HELPING CHILDREN BUILD STRONG FUTURES

MENTAL HEALTH SERVICES

The primary goal of Hibiscus' mental health program is to build strong children. Our therapists are trauma trained, masters level clinicians. Children in the Shelter and Village receive counseling to help them recover from the trauma of abuse. Hibiscus also provides outpatient services to children and families on the Treasure Coast and Okeechobee. The agency specializes in the treatment of trauma-based disorders, infant mental health, and healing victims of sexual abuse. Clinicians in the Sexual Abuse Treatment Program (SATP) receive specialized annual training.

Hibiscus and the community we serve are fortunate to have the only Department of Health sanctioned Sexual Abuse Treatment Program on the Treasure Coast and Okeechobee.

**INFANT MENTAL HEALTH | EQUINE & MUSIC THERAPY
TRAUMA INFORMED CARE | SEXUAL ABUSE TREATMENT PROGRAM**



763

CHILDREN & FAMILIES SERVED

OUR GOAL IS TO HELP CHILDREN HEAL FROM THE TRAUMA OF ABUSE AND LEARN POSITIVE, ADAPTIVE AND CRITICAL THINKING SKILLS.

MIA was eight when she came to Hibiscus Shelter. She was a victim of severe trauma and had been in multiple foster placements. During her two years at the Shelter, Mia made considerable progress. She learned coping skills to decrease negative behavior and better regulate her emotions. Counseling helped her overcome the fear and anger she experienced. Eventually Mia was placed in a pre-adoptive home. **Best Wishes, Mia!**

85%

OF CHILDREN WHO RECEIVED TREATMENT REDUCED TRAUMA SYMPTOMS AS EVIDENCED BY PRE/POST ASSESSMENT SCORES.

93%

OF CHILDREN INCREASED PROTECTIVE FACTORS AS EVIDENCED BY PRE/POST ASSESSMENT SCORES.

100%

OF CHILDREN IN SHELTER AND VILLAGE RECEIVED A MENTAL HEALTH ASSESSMENT WITHIN 24 HOURS OF ADMISSION.

40+

COMMUNITY MENTAL HEALTH RECEIVED AN INCREASE IN REFERRALS OVER THE PREVIOUS YEAR



**IN THEIR
OWN WORDS**

“I LOVE COMING TO THERAPY, IT’S SO RELAXING.”

“THERAPY IS MY FAVORITE TIME OF THE WEEK. I LOOK FORWARD TO IT.”

“MY THERAPIST GETS ME SO WELL.”



“BEFORE I STARTED THERAPY, I WOULD GET MAD ALL THE TIME AND FIGHT WITH PEOPLE BUT NOW WHEN SOMEONE SAYS SOMETHING I JUST SAY WHATEVER AND WALK AWAY.”



**MEET
MS. LACEY**

LACEY BUXTON, LMHC
DIRECTOR OF OUTPATIENT SERVICES/SEXUAL ABUSE TREATMENT PROGRAM (SATP) COORDINATOR

Lacey has been with Hibiscus since 2018 and was previously employed with the agency for four years. She is a Licensed Mental Health Counselor with more than 15 years' experience working with victims of abuse and violence. In addition to her other duties, Lacey also supervises the Sexual Abuse Treatment Program (SATP).



**MEET
MS. SUSAN**

SUSAN MURPHY, LMHC
DIRECTOR OF RESIDENTIAL CLINICAL SERVICES

Susan is a Licensed Mental Health Counselor and has been with Hibiscus since 2012. She manages the residential counseling program known as Behavioral Health Overlay Services (BHOS) and supervises master-level therapists and interns. Susan also facilitates clinical training for new employee orientation.

WE ARE PERSEVERENT

SUPPORTING FAMILIES

IN CRISIS (SFC)

SFC is a nationally recognized primary child abuse prevention program serving St. Lucie County. The program helps families resolve crisis situations, develop tools to address future crises and grow stronger. SFC staff help families persevere. A specially trained Family Advocate is assigned to the family. Services include financial aid to avoid evictions, help with domestic violence and substance abuse, in-home counseling, stress management tools, job applications and interviews and budgeting skills. Services typically range from 8-12 weeks, but the program is flexible should families need more assistance.

527 CHILDREN & FAMILIES SERVED



SFC HAS AN ANNUAL 100% SUCCESS RATE FOR KEEPING CHILDREN OUT OF THE CHILD WELFARE SYSTEM.

FAMILIES CAN GET FOOD, BASIC HOUSEHOLD ITEMS AND BABY SUPPLIES FROM OUR FOOD PANTRY.

GINA is a single parent of three who contacted SFC for rental assistance to avoid eviction. One of her children has cancer and is receiving treatment in Miami. Transportation and the cost of treatment resulted in financial hardship for Gina. The Family Advocate referred her to a local taxi company and helped her apply for Medicaid. Gina's property owner declined financial assistance from SFC, but Hibiscus was able to help with groceries and household items. Financial assistance allowed her to catch up on the back rent she owed. Gina persevered to ensure her children were safe and had the essential medical treatment. She didn't give up and is now back on track and doing much better.



MEET MR. WILL

WILL MALONE
DIRECTOR OF PREVENTION PROGRAMS

Will has been with Hibiscus since 1996 and is the second most tenured employee. Will has a passion for helping children and strengthening families. He began as a childcare worker at the Shelter before joining Hibiscus outreach programs. He currently supervises Supporting Families in Crisis (SFC) and SafeCare.

THE SFC PROGRAM MOTTO

“ASKING FOR HELP IS A SIGN OF STRENGTH.”

95%

OF FAMILIES WHO COMPLETED SERVICES SUCCESSFULLY SHOWED IMPROVEMENT IN AT LEAST 3 OUT OF 5 OUTCOME SCALES OF THE SELF-SUFFICIENCY STANDARD.

100%

OF FAMILIES SERVED HAD NO VERIFIED REPORTS OF ABUSE OR NEGLECT DURING SERVICES AND 99% ONE YEAR AFTER COMPLETION OF SERVICES.

100%

OF FAMILIES WHO COMPLETED THE PROGRAM DEMONSTRATED KNOWLEDGE AND COMPETENCY IN ACCESSING COMMUNITY RESOURCES.

WE ARE SAFE

SAFECARE

SafeCare is an evidence-based, at-home education and training program for parents who are at-risk or have been reported for child abuse or neglect. The goal is to ensure children are protected and families can provide a safe home environment. SafeCare is available to families in St. Lucie and Indian River Counties who have one or more risk factors including substance abuse, domestic violence, teenage parents, parents of special needs children, single parents, and low-income families. Studies have found the program effective for families struggling with substance use, intimate partner violence, and depression — all factors that increase the risk of child abuse and neglect. SafeCare is a collaboration between Hibiscus Children's Center and Behavior Basics, Inc.

100%

OF CHILDREN WERE MAINTAINED WITHIN THE FAMILY HOME PREVENTING ENTRY IN FOSTER CARE

96%

OF FAMILIES SERVED SHOWED NO FINDINGS OF CHILD ABUSE DURING SERVICES AND 6 MONTHS POST COMPLETION OF SERVICES

90%

OF INDIVIDUALS WHO COMPLETED THE PROGRAM INCREASED POSITIVE PARENTING OUTCOMES BY COMPARING PRE AND POST ASSESSMENT OBSERVATION CHECKLIST RESULTS

318

CHILDREN & FAMILIES SERVED

BRANDON is a single dad with three children who was referred to SafeCare. Brandon has a severe disability due to an on-the-job injury. His children's mother has a substance abuse problem and refused to get treatment, so Brandon was awarded custody. He needed assistance and SafeCare was there to help. Brandon was determined to be a good parent and keep his children. He cooperated with weekly home visits and successfully completed the parent/ infant interaction, home safety and health modules of the SafeCare curriculum.

PARENT-INFANT INTERACTION

PARENT-CHILD INTERACTION

CHILD HEALTH

HOME SAFETY

WE ARE EMPOWERED

PARENTS AS TEACHERS (PAT)

PAT is a parent education, home-visiting program that empowers parents with the knowledge and support they need to succeed. The goal of the PAT Program is to make parents stronger and more confident by providing them with child development knowledge, parenting support, early detection of developmental delays and health issues, strategies for preventing child abuse and neglect and boosting school readiness. PAT serves families in Okeechobee and Martin Counties.

527 CHILDREN & FAMILIES SERVED



ELENA entered the Parents as Teachers program as a young, first-time mother who recently moved to the United States. She was an active participant and eager to learn and get a job to ensure her family was provided for. The Parent Educator helped Elena identify skills and potential job opportunities. Elena had previous experience in the restaurant industry. She received an interview and was quickly offered the job. Elena was grateful to the Parent Educator for helping her find employment and improve her family's well-being.

1,111

HOME VISITS WERE MADE

12

GROUP CONNECTION OPPORTUNITIES WERE OFFERED THIS YEAR

55

FAMILIES ATTENDED AT LEAST ONE GROUP CONNECTION

60

FAMILIES WERE CONNECTED TO AT LEAST ONE COMMUNITY RESOURCE

17

SUCCESSFUL GRADUATIONS SEEN THROUGHOUT THE YEAR



MEET MS. AMANDA

AMANDA REIDEL, M.S.
PAT PROGRAM DIRECTOR

Amanda has a master's degree in Human Services and has been with Hibiscus for 15 years. She began her career as a children's mental health therapist and was eventually offered the opportunity to begin a new program focusing on parenting and prevention. Amanda uses her knowledge and expertise to empower parents through a better understanding of child development as well as guidance in advocating for themselves.

HIBISCUS STAFF

TAKING CARE OF CHILDREN & FAMILIES



Hibiscus Children's Center employs more than 125 dedicated employees. The agency promotes and provides a trauma-informed workplace—one that operates with the understanding of trauma and its negative

effects on employees and clients and works to mitigate those effects. Our strength is grounded in our employees, dedicated to providing the best possible environment for children to heal, feel safe and imagine a better life. Staff endeavor to provide positive interaction that changes lives, inspires hearts and lifts the spirit. Every day their commitment is evident as they provide the highest level of service to children at the Shelter, Village and community outreach programs with support from administrative and Treasure House teams. Our employees are a positive influence in the lives of children, and we are fortunate they're part of the Hibiscus family.

- Matt Markley, President/CEO

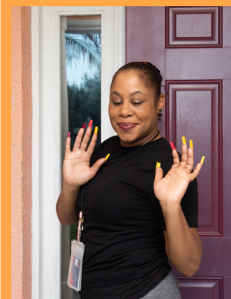
SHELTER JENSEN BEACH



FINANCE & COMMUNITY OUTREACH FT. PIERCE



VILLAGE VERO BEACH



MENTAL HEALTH TREASURE COAST & OKEECHOBEE

THRIFT STORE & COO STUART



DEVELOPMENT TREASURE COAST



IN OLIVIA'S OWN WORDS



Many people pass down 12th Street in Vero Beach every day. Most don't know how much of a lifesaver Hibiscus Children's Village is for many children. I'm here to tell you that Hibiscus Children's Center is an Angel in the darkness for many neglected and abused children. At Hibiscus I learned many things. I learned how to get along better with kids my own age, I learned to cope with anger and stress, and most importantly I learned the way I was treated before I went to Hibiscus was not how any child should be treated. Hibiscus has kind, caring staff and a wonderful mental health team. They listened to me...and not just nodded their head...but really listened. They understood how badly I had been hurt before they took me in. When I first came to Hibiscus I was scared. But after a few days I felt safe and happy. Not everyone has a good view on why there are children's homes...it is not because the children are bad. But it is because today not everyone is fit to be a parent. And that is a sad truth. But with the help of Hibiscus Children's Center and loving Foster Parents, I like to think that a lot of wrongs that happen can be righted. My goals are to continue school and achieve my 4-year degree in Business. In the future I'd like to have my own small business, a husband and a child or two...and, most importantly, I would like to be a foster parent for a child that was neglected and mistreated. I can change that child's life and show her how she is supposed to be treated and loved for the special child she is.

And as for Hibiscus Children's Center, I could never thank them enough for everything they have done for me and how they changed my life.



HIBISCUS CHILDREN'S CENTER GUILDS

Brightening the lives of children and youth for over 30 years! These dynamic volunteers have directly supported the children's programs through hosting some of the best fundraisers on the Treasure Coast! The Guilds also help provide special "extras" for the children—prom dresses, salon days, birthday parties, Santa's Elves Workshop, and much more.



EST. 1992 RAISED \$12 MILLION

EST. 1997 RAISED \$9 MILLION

WE ARE THANKFUL

1,700

CHILDREN & FAMILIES SERVED LAST YEAR

450,000

SAFE NIGHTS SINCE OPENING

18,000

SAFE NIGHTS ANNUALLY

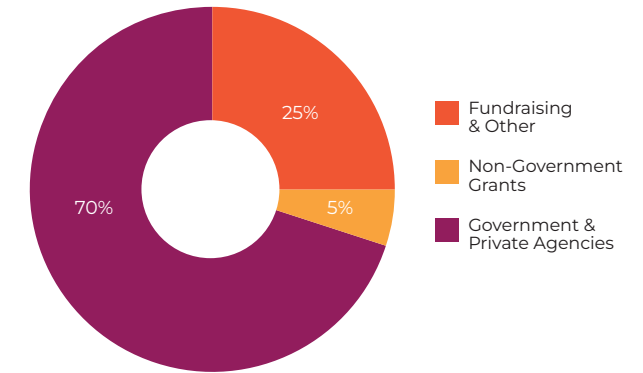


FINANCIAL SUMMARY

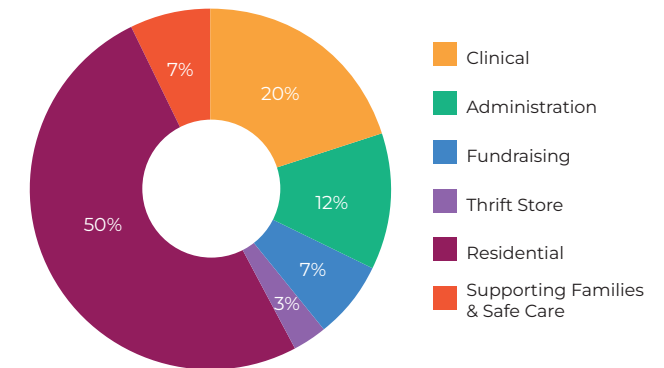
FINANCIAL PERFORMANCE

	FY 2020/21 AUDITED	FY 2021/22 AUDITED
Revenue	\$9,323,034	\$8,978,051
Operating Expenses	\$8,335,245	\$8,724,422
Operations Surplus/Deficit	\$987,789	\$253,629
Other Income	\$652,188	(\$366,688)
Net Surplus/Deficit	\$1,639,977	(\$113,059)

SOURCE OF FUNDS



USE OF FUNDS



OUR DONORS

THANK YOU
TO ALL OF OUR
GENEROUS DONORS

“HEARTFELT THANKS TO OUR GENEROUS DONORS WHO HAVE HELPED CHANGE THE LIVES OF CHILDREN AND FAMILIES—WE ARE ETERNALLY GRATEFUL FOR YOUR SUPPORT. THANKS ALSO TO OUR AMAZING VOLUNTEERS, YOU ARE THE GLUE THAT HOLDS THE AGENCY TOGETHER.” MATT MARKLEY, HIBISCUS PRESIDENT/CEO

Hibiscus Children’s Center would like to thank and recognize those donors that have significantly contributed throughout the agency’s history.

HIBISCUS HUMANITARIAN SOCIETY

\$500,000 OR MORE

Albert M. Covelli Foundation
& Mrs. Josephine Covelli
Mrs. Sally A. Batz
& Mr. Henley Sandidge
Mr. & Mrs. Pierce K. Crompton, Jr.
Anonymous
Mr. J. Rhodes Davis
Mr. & Mrs. Arthur Levitt, Jr.
& The Winston Foundation, Inc.
Mr. Charles S. McIntyre, III & B.D.
& J.E. McIntyre Foundation
Mrs. Helen T. Robertson

HIBISCUS HAVEN SOCIETY

\$250,000 - \$499,999

Mr. & Mrs. Lee A. Bertman
Barrie M. Damson* & Joan Damson
Mr. & Mrs. Armund N. Ek
Ms. Diana S. Forman
Mr. Gary W. Frazier
& The Frazier Foundation
Mrs. Katherine W. Hawkins
John’s Island Foundation
Joseph & Phyllis Ottaviano
Charitable Trust
Norton & Judy Viny Private Foundation
& Mrs. Norton Viny

Mr. & Mrs. Joseph F. Ottaviano
Ms. Jacqueline M. Lee
Publix Super Markets Charities
Quail Valley Charities, Inc.
Mr. & Mrs. John J. Schumann, Jr.
& Schumann Foundation, Inc.
Mr. Mark Schumann
Mr. David L. Smythe
Mr. & Mrs. Melvin D. Teetz
William & Helen Thomas
Charitable Trust
United Way of Indian River County
United Way of Martin County
Mrs. Daisy Whitehill

THE TILTON ANGEL SOCIETY

\$100,000 - \$249,999

Mr. & Mrs. Michael Atieh
The Betty & Leo Balzereit Foundation
Mrs. Josephine D. Bannon

Mrs. Herman F. Becker
Mrs. Patricia A. Borg
Braden & Braden, AIA, P.A.
Samuel M. & Alma Catsman
Foundation, Inc.
Mr. & Mrs. Morris J. Cohen
Mr. & Mrs. Geraud Darnis
Mr. & Mrs. Kingsley S. Durant
Mr. Andrew W. Edmonds
Bernard A. Egan Foundation Inc.
Mr. Thomas A. Evinrude
Mr. & Mrs. George M. Fetterolf
The Fortin Foundation, Inc.
Mrs. Lauri Friedland
Mrs. India E. Gaffney
George E. Warren LLC
Anonymous
Mr. & Mrs. Melvin R. Goodes &
Melvin R. Goodes Family Foundation
Mrs. Miriam S. Grabow

Grand Harbor Community
Outreach Program, Inc.
Mr. & Mrs. Ira B. Greenberg
Mr. & Mrs. Michael K. Harrell
Mrs. Agnes R. Hayden
The HMS Foundation
Hobe Sound Community Chest, Inc.
Mrs. Marge M. Hohman
Indian River Community Foundation
Indian River Impact 100
Jake Owen Foundation
John’s Island Community Service League
Knight Vision Foundation Inc.
Mr. & Mrs. John F. Krahnert
Frances Langford Foundation
Mr. & Mrs. Theodore J. Leonsis
& Leonsis Foundation
Mr. & Mrs. Charles B. Lingamfelter
Mariner Sands Charity Week
McManus Foundation, Inc.

Mr. & Mrs. Frank R. Noonan
Nicholas H. Noyes, Jr.,
Memorial Foundation
Mr. William R. O’Connor
Mr. & Mrs. Michael O’Reilly
Mr. & Mrs. Daniel A. Pfau & The
Daniel & Susan Pfau Foundation
Prestige Health
Mrs. Judithe M. Price
Realtor Association of Martin County
Ms. Margaret W. Richebourg Temple*
Mrs. Mildred J. Robideau
Seaman Family Foundation
Mr. Arthur W. Silvester, Jr.
& Silvester Foundation, Inc.
Mary E. Smith
The 32N80W Fund
Mr. & Mrs. Theodore N. Tiemeyer
Mrs. LaVaughn Tilton*
United Way of St. Lucie County, Inc.

Mrs. Kathleen B. Walgreen
& The Kathleen B. & Charles R.
Walgreen III Foundation
Mr. & Mrs. K. G. Walker
Mr. & Mrs. Robert J. Weissman, Sr.
Mr. & Mrs. David Wilson
Ms. Roseann D. Wolcott
Mr. & Mrs. Frank J. Zappala, Jr.

*Deceased Donor



DONATIONS

JULY 1, 2021 - JUNE 30, 2022

\$50,000 - \$99,999

The 32N80W Fund

\$25,000 - \$49,999

Samuel M. & Alma Catsman Foundation, Inc.
Anonymous
Barrie M. Damson* & Joan Damson
Mr. & Mrs. Armund N. Ek
Mrs. Miriam S. Grabow
John's Island Community Service League
John's Island Foundation
Mr. & Mrs. Arthur Levitt, Jr. & The Winston Foundation, Inc.
Mariner Sands Charity Week
Mr. & Mrs. Michael O'Reilly
The Albert M. Covelli Foundation
William & Helen Thomas Charitable Trust
United Way of Indian River County

\$10,000 - \$24,999

Mrs. Sally A. Batz
& Mr. Henley Sandidge
Mrs. Herman F. Becker
Mr. & Mrs. Peter Berger

Braden & Braden, AIA, P.A.
Mrs. William Childs*
Mr. & Mrs. Pierce K. Crompton, Jr.
Mr. & Mrs. Michael J. Del Priore
Dubner Family Foundation
Bernard A. Egan Foundation Inc.
Mr. & Mrs. George M. Fetterolf
The Fortin Foundation, Inc.
Mr. Timothy Girard & Girard Equipment
The Ted and Lorraine Glasrud Family Foundation
Grand Harbor Community Outreach Program, Inc.
Mr. & Mrs. Michael K. Harrell
Jake Owen Foundation
Mr. & Mrs. Richard M. Kessler
Mr. & Mrs. James Krow
Mr. & Mrs. Michael F. LaPorta
Mr. Bradley G. Lorimier
Maximus Foundation
NAH Foundation
Mr. & Mrs. Frank R. Noonan
Orchid Island Golf and Beach Club
Quail Valley Charities, Inc.
Mr. & Mrs. Mark Rice
Mrs. Helen T. Robertson
Seaman Family Foundation
Sterling Auction and Realty Co
Mr. & Mrs. Melvin D. Teetz
United Way of Martin County
United Way of St. Lucie & Okeechobee

Mr. & Mrs. Marty Weber
Mr. & Mrs. David Wilson
Mr. & Mrs. Harvey J. Wilson

\$5,000 - \$9,999

Mr. & Mrs. Richard D. Allen
Dr. Donna Ambrosino and Dr. Howard Martin
Anonymous
Bank United
Mr. & Mrs. Lee A. Bertman
Mr. & Mrs. John T. Brennan
Ms. Carole B. Brown
Camp-Younts Foundation
Mr. & Mrs. Greg Capello
Charles and Joan Hermanowski Family Foundation
Mr. & Mrs. Earl C. Conway
Ms. Tracey Dexter
& Mr. Jimmy Glenos
Florescue Family Foundation
Mr. & Mrs. Terry G. Gega
Mr. & Mrs. William J. Graham
Mr. & Mrs. John Gregory
Mr. & Mrs. James A. Harrell
Mrs. Agnes R. Hayden
Mrs. Marilyn Hessler
Ms. Beverly Holmes
Chef Leanne Kelleher & The Tides Restaurant
Mr. & Mrs. James P. Kelly

Mr. & Mrs. William King
Louis L. Lawson Fund
Mr. Guillermo Lucas
MCH Transportation Co.
B.D. & J. E. McIntyre Foundation
& Mr. Charles S. McIntyre, III
Mr. & Mrs. James M. McLaughlin
Alex G. Nason Foundation, Inc.
Mr. & Mrs. John D. Pearse
Mr. & Mrs. David H. Prothro
& The Perkins-Prothro Foundation
Mr. & Ms. Gerald D. Saelzer
Ms. Margaretta J. Taylor
Mr. & Mrs. Theodore N. Tiemeyer
The TJX Foundation, Inc.
The Tyler Foundation
Mr. & Mrs. Jerome M. Zollenberg
& Zollenberg Family Fund

\$2,500 - \$4,999

Allen Family Foundation, Inc.
Bailey Family Foundation
Mr. & Mrs. Richard P. Brennan
Mr. & Mrs. David C. Brow
Cleveland Clinic Martin Health
Mr. & Mrs. H. R. Coleman
Mr. & Mrs. John Corbett
Mr. & Mrs. Nelson Cover, Jr.
Mr. Robert Crandall
Mr. & Mrs. William B. Crandall
Mr. & Mrs. William C. Dallas

Datha Gene Foundation
Mr. & Mrs. Al Diaz
Dr. & Mrs. Randolph W. Divine
& Divine Animal Hospital
Dollar General Literacy Foundation
Ms. Trina Estrella
Mr. & Mrs. John F. Fagnoli
Dr. & Mrs. Albert E. Gardner
Ms. Judy E. Girard
Dr. Christina T. Hart
Mr. & Mrs. Robert J. Hausen
Head, Heart and Hands of Indian River Club
Mr. & Mrs. Richard D. Hoffman
Mr. Simon Jenkins
Mr. & Mrs. John F. Krahnert
Mr. & Mrs. John T. La Duc
Louis N. Cassett Foundation
Mr. & Mrs. Matthew Markley
Mrs. Cynthia Montena
Mr. Gordon R. Nearing
New Vision Eye Center, LLC
Nora Roberts Foundation
Orangetheory Fitness
Mr. & Mrs. Lyle R. Ostrom
Panaderias LLC
Mr. & Mrs. Bruce B. Pitcher
Premier Realty Group
Publix Super Markets Charities
Mr. Harold Reiter
& Ms. Brenda Malloy-Reiter

Mr. & Mrs. William S. Ringler
Mr. & Mrs. Brian D. Robbins
Mrs. Bonnie Scanlin
Mr. & Mrs. Jerry Schaumburg
The Sexton Family Foundation
Spectra Investment Management LLC
St. Lucie Draft House & Sports Bar, Inc.
Mr. & Mrs. Bruce W. Stone
The Jack Strickland Charitable Fund
Mr. & Mrs. Rodney Sturm
Mr. Joseph G. Temple, Jr.
Mr. & Mrs. Kyle Waddell
Mr. & Mrs. Larry A. Wilhelm

\$1,000 - \$2,499

Mr. & Mrs. Bruce Albrow
All Jetting Technologies, Inc.
Ameriprise Financial
Dr. Seth Baker & Dr. Mary Baker
Ms. Janet Bartow
Mr. & Mrs. James S. Beckwith, IV
Mr. & Mrs. Benedict G. Ballman, Sr.
Mrs. June D. Bercaw
Mr. & Mrs. Frederick N. Blount
Mr. & Mrs. Kevin A. Bousquette
Mr. Morgan T. Brandt
Mr. & Mrs. Willard Bright
Mr. & Mrs. Martin Brophy
Mr. & Mrs. William Bull

Mr. & Mrs. James Byrnes
Cascades of St. Lucie West Women's Club
Mrs. Carole A. Casey
Mr. & Mrs. Richard T. Cassell
Mr. Joseph Cataldo
Mr. & Mrs. Kenneth C. Cech
Mr. & Mrs. William Churney
The Ciferri Family Foundation, Inc.
Ms. Christina Cleveland
The Clifford Family Foundation
Mr. & Mrs. Phillip E. Coviello
Mr. & Mrs. Robert W. Croce
Cummings Wealth Management, Inc.
Mr. & Mrs. Michael Curley
Mr. & Mrs. Donald M. Curtis
Mr. & Mrs. Joseph DeLuca
Mr. & Mrs. James W. Dodds
Mr. Michael Donovan
Mr. & Mrs. Joseph R. Dorsey, Jr.
Mr. & Mrs. Richard H. Duch
Mr. Brian Dunnam
Mr. & Mrs. Mark G. Duvall
Mrs. Karen R. Edds
Elite Physiques
Mr. & Mrs. Michael E. Endres
Ms. Ann T. Evans
Mr. & Mrs. Emmett Evans
Mr. & Mrs. Edward J. Farrell, Jr.
First Impressions Preschool
Florida RV Trade Association
Florida Blue Foundation
For Him Plumbing
Mrs. Nancy Forlines
Fraternal Order of Eagles Martin County #3896
Mrs. Roni M. Fuster
Mrs. Katherine B. Garlington
Mrs. Francesca Gendreau
Ms. Mary P. Graves
The Harold and Kate Reed Family Foundation
Mr. & Mrs. Thomas Hayes
Mrs. Elizabeth M. Herold
Mr. & Mrs. Vincent Iatesta
Iconic Dermatology
Mr. & Mrs. David A. Israel
J.McLaughlin
Mrs. Elizabeth S. Jacobsen
Mr. & Mrs. Dale Jacobs
Mr. & Mrs. Robert S. Janicki
Jill Heather Goldberg Charitable Foundation
John Michael Matthews Fine Jewelry
Mrs. Angela V. Johnston
Joyce Properties, Inc.
Mr. & Mrs. Gregory L. Kaufman
Mr. & Mrs. Jeffrey A. Kedrowski
Ms. Marilyn Kelly
Mr. & Mrs. Gage A. Kent

Ms. Romelia Ker
 Mrs. Michelle D. King
 Mr. Jeffrey Kitto
 Mr. & Mrs. John E. Klein
 Mr. & Mrs. Paul R. Knapp
 Mr. & Mrs. David Knight
 Mr. & Mrs. Brian Korkus
 Anonymous
 Mrs. Julie-Anne A. Kress
 Ms. Judy C. Landgrave
 The Law Offices
 of Travis R. Walker, P.A.
 Mr. & Mrs. Steven D. Levy
 Living Faith Church at Tradition Inc.
 Mr. & Mrs. Dennis Longstreet
 Mrs. Dorothea Lucarelli
 Mr. & Mrs. Russell A. Mann
 Ms. Caroline S. Markfield
 Martin County Fair Association
 Mr. & Mrs. Robert Mathias
 J.N. McArthur Foundation
 Mr. & Mrs. Michael McGuinnis
 Mr. & Mrs. Thomas McKelvey
 Mr. & Mrs. Andrew Mellor
 Mr. & Mrs. Nicholas Melnick
 Mr. & Mrs. James A. Mitchell
 Mr. & Mrs. Raymond A. Mitchell
 Mrs. Kathleen Mittelbrun
 Mr. & Mrs. Thomas Murphy
 Ms. Marilyn Mustapick

Mr. & Mrs. Harold A. Ofstie
 Mr. & Mrs. Raul F. Oliva
 Mr. & Mrs. Daniel E. O'Neil, III
 Mr. & Mrs. James F. Orr, III
 Mr. & Mrs. Michael Orsatti
 Mrs. Larisa Palazzolo
 Mr. & Mrs. Gary V. Parlin
 Pledgeling Foundation
 Mr. & Mrs. C. Clay Price
 Mr. Benjamin Pridemore
 Mr. & Mrs. George Prueger
 Mr. & Mrs. Frank J. Quirk
 Mrs. Trudie Rainone
 Re/Max of Stuart, Inc
 Dr. & Mrs. Hedrick Rivero
 Rosewood Elementary
 Magnet School
 Savastano Family Foundation, Inc.
 Mr. & Mrs. Leonard Schiraldi
 Mr. & Mrs. Richard W. Schlitt
 Mr. & Mrs. Gabriel Schwartz
 Mr. & Mrs. Terry A. Serafini
 Mr. & Mrs. George W. Sharpe, II
 DJ Smith Family Foundation
 Ms. Geraldine M. Smith
 Mr. & Mrs. Jim Stark
 Mr. Michael Stefanacci
 Mrs. Susan Strickland
 Stuart Congregational Church, Inc.
 Tall Pines Charitable Foundation

Mr. & Mrs. Thomas G. Taylor
 Tijeras Foundation
 Mrs. Raquel V. Tilton
 Tompkins Charitable Gift Fund
 Mr. & Mrs. Herbert I. Torbin
 The Vandeventer Foundation
 Vero Beach Elks Lodge #1774
 Mr. & Mrs. Otto J. Vitale
 Mr. & Mrs. John H. Wagner, III
 Walmart Store #8150
 Walmart Store #4546
 Mr. & Mrs. Robert V. Ward
 The Wawa Foundation
 Ms. Wivi-Anne Weber
 Mr. & Mrs. James F. Webert
 Mrs. Marianne Weder
 Welcome Home Realty
 International LLC
 Mr. Donald Wemingler
 & Ms. Carol Webb
 West St. Lucie Elks Lodge #2823
 Mr. & Mrs. Kent E. Whittaker
 Wildwood Antique Mall
 Wilks Family Foundation
 Wong Family Foundation
 Mr. & Mrs. Peter Wood
 Mr. & Mrs. Frank J. Zappala, Jr.
 Richard A. Zappala
 Family Foundation

HERITAGE LEGACY SOCIETY

Hibiscus has been fortunate to be a part of family legacies throughout our 37 years. We are thankful for these thoughtful gifts that were planned to ensure we will be here when kids need us.

Anita G. Astrachan Estate
 Beryl I. Bearint Estate
 Beech Trust
 Raymond L. Blackwood Estate
 Henrietta M. Blair Estate
 Mahlon A. Cline Estate
 Fannie Collins Estate
 Charles Cooper Estate
 Constance Dai Estate
 Richard A. Daunoras Estate
 Dorothy Davis Estate
 Linda DiMauro Estate
 Katherine Dunscombe Estate
 George & Gwen Ferrington Estate
 Diana Spau
 Iding Forman Charitable Trust
 Jim Fredlock Estate
 Margaret Bloom Greenwalt Estate
 Barbara Groves Estate
 Edward J. Gryl Estate
 Guy A. Hardy Estate
 Ann Harrell Estate
 Katherine W. Hawkins Estate



Leon J. LaRoche Estate
 Clara B. Lefterson Estate
 Love S. LaRoche Estate
 Louis Lawson Estate
 Lena LeClair Estate
 Ell C. Lee Estate
 Elizabeth J. Lowe Estate
 Mary B. Maize Estate
 Judith Marchioli Estate
 Clarence R. McKinstry Estate
 Mary Jane McManus Estate
 Milford H. Meuser Estate
 Estate of Mary Carden Murray
 Lottie Neel Estate
 Nicholas H. Noyes Memorial Fund
 Beulah Nyblad Estate
 Obersheimer Estate
 Estate of Claudia F. Pascal
 Eleanor W. Pennington Estate
 Gertrude R. Peterkin Estate
 Virginia Pree Estate
 Julia Renaldo Estate
 Mildred J. Robideau Estate
 Carl J. Sarne Estate
 Jim Silvin Estate
 Mary E. Smith Estate
 Howard L. Smith Trust
 Melbum G.A. Sonsteby Estate
 Paul A. Spaulding Estate
 Jane Stillwell Winters Trust
 Edward A. Tatarczuk Estate

William & Helen Thomas
 Charitable Trust
 Anita R. Tilton Trust
 LaVaughn Tilton Estate
 Ransom R. Tilton Trust
 Mimi T. Towl Estate
 Lorraine Vanderstad Estate
 Charles E. Wallenhorst Estate
 William V. Warga Estate
 Margaret A. White Estate
 Margaret B. Williams Estate
 Lucy M. Zipko Estate

HEIRLOOM LEGACY SOCIETY

Donors who have indicated they are including Hibiscus Children's Center in their Legacy Plan.

Anonymous
 Diana Baker
 Sally Batz
 Madelaine Davis
 Mike & Jan Harrell
 Norma & Andrew Mellor
 Mr. & Mrs. Frank Noonan
 Geraldine Sligar
 Dr. James Vopal
 Mrs. Marianne Weder
 Ms. Marion Zborowski

***Deceased Donor**

OUR PARTNERS



OUR LOCATIONS

OKEECHOBEE

Mental Health Services
Community Outreach
Parents as Teachers

410 SE 2nd Avenue
Okeechobee, FL 34974
772.340.5750

FORT PIERCE

Mental Health Services
Supporting Families in Crisis
SafeCare Program

1905 S. 25th Street, Ste 100
Fort Pierce, FL 34950
772.340.5044 SFC
772.340.5750 CMH

VERO BEACH

Children's Village
Career Pathways to Independence
Graphic Design Impact Center

1145 12th Street
Vero Beach, FL 32960
772.299.6011

JENSEN BEACH

Tilton Family
Children's Shelter

4001 NE Savannah Rd.
Jensen Beach, FL 34957
772.334.9311

STUART

Treasure House
Thrift Shop

839 N. Federal Hwy.
Stuart, FL 34994
772.692.5730

GENERAL MAILING ADDRESS: P.O. Box 1406, Jensen Beach, FL 34958



Hibiscus Children's Center
Saving Children Since 1985